

# Specific Effects in Liquids Subject to Rotational Motion

N. Bors\*, A. Tămaș\*\*, Z. Groșșian\*\*

\*Silbermann Analytics GmbH, Germany, [nicu.bors@online.de](mailto:nicu.bors@online.de);

\*\*"Politehnica" University of Timisoara, Faculty of Industrial Chemistry and Environmental Engineering, P-ta Victoriei 2, 300006 Timisoara, Romania, Phone: (0040) 256-404222, E-Mail: andra.tamas@chim.upt.ro

**Abstract:** Rotational motion in ring-shaped spaces delimited by concentric cylinders is specific to rotational viscometers and consists of the relative flow of the liquid layers with velocities varying between the maximum value which correspond to the layer placed near the rotating cylinder and the minimum value when the layer is in contact with the fixed cylinder. Taylor hydrodynamic number ( $Ta$ ), which depends on the ring-shaped space properties, revolution and kinematic viscosity, allows the evidence of all the changes which appears to layers flow and deformation through the gradually increasing of the revolution. Thus, it is possible to identify the transition or critical regime specific to different rheological types.

**Keywords:** rotational motion, shear rate, shear stress

## 1. Introduction

For liquids subject to rotational motion (stirring in cylindrical vessels, liquid-ring pumps, centrifugal pumps or separators, rotational viscometers, lubricating bearings), the hydrodynamic criteria have characteristic expressions as a function of the rotational radius, revolution or angular velocity and the kinematic viscosity. The rotating part of rotational viscometers can be cylindrical, conic or ring-shaped, figure 1 a,b,c.

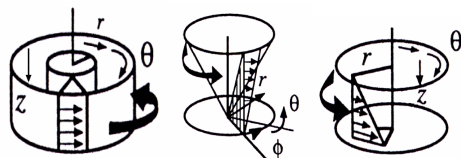


Figure 1a, b, c. Types of rotational reometers

**The fluids rheological behaviour.** The rotational motion in ring-shaped spaces delimited by concentric cylinders, specific to rotational viscometers (Couette type - with the outer rotative cylinder, Rheotest type- with the inner rotative cylinder or Taylor-Couette type - with both cylinders subject to rotational motion), consists in the relative flow of the liquid layers with a velocity  $w$  which decreases gradually from the maximum value (reached in contact with the rotating wall with the biggest revolution) to the minimum one (in contact with the fixed wall). The shear rate of the liquid layers  $\gamma$  is correlated to the ring-shaped space dimensions (the difference between the outer  $r_o$  and the inner  $r_i$  radii,  $\Delta r = r_o - r_i$ ) as well the angular velocity  $\omega$  or the revolution of the rotational surface  $n$ . The shear rate for the system with the inner rotative cylinder is:

$$\gamma = dw/dy = dw/dr \quad (1a)$$

$$\gamma = \frac{\omega \cdot r_o^2}{r_o^2 - r_i^2} = \frac{2 \cdot \pi \cdot n \cdot r_o^2}{r_o^2 - r_i^2} \quad (1b)$$

For a rheometer with a diameter of the inner cylinder 80mm and the ring-shaped space thickness 2mm, to a revolution value  $0.1 \leq n \leq 15 \text{ s}^{-1}$ , the shear rate will be modified between  $6.7 \leq \gamma \leq 1012 \text{ s}^{-1}$ .

The friction force between the liquid layers subject to motion due to the rotation of one of two cylinders leads to the torsion moment  $M_t$  appearance. This one will act through the other cylinder accordingly the shear stress  $\tau$  which depends on the fluid rheological properties and the cylinder dimensions (radius  $r$ , height  $H$ ):

$$M_t = 2 \cdot \pi \cdot H \cdot r_i^2 \cdot \tau \quad (2a)$$

$$\tau = M_t / 2 \cdot \pi \cdot H \cdot r_i^2 \quad (2b)$$

Through the shear stress correlation with the shear rate,  $\tau = f(\gamma)$  it is possible to establish the general rheological equation:

$$\tau = \tau_0 + K \cdot \gamma^m \quad (3)$$

where:  $\tau_0$  - initial shear stress,  $K$  - preexponential coefficient,  $m$  - exponent.

## 2. Materials and methods

As a function of the terms value from (3) can be defined the rheological behaviour of some fluids:

**a. Newtonian fluid** ( $\tau_0 = 0$ ;  $m = 1$ ;  $K = \eta$ ):

In our personal researches were met numerous cases of liquids with Newtonian behaviour: aqueous solutions, ethylene glycol (EG), hydrocarbons, mineral (MO) and paraffin oil (PO), diesters used as plastifiers, petroleum

(MF-P, with saturation magnetization 900Gs) or paraffin oil (MF-PO) based magnetic fluids [1,2]. The dependence  $\tau = f(\dot{\gamma})$  is presented in figure 2a and the rheological equations in Table 1.

### b. Viscoplastic fluid ( $\tau_0 \neq 0$ ; $m=1$ ):

The behaviour of this rheological type can be described using Bingham law (4a) or Newton law (4b):

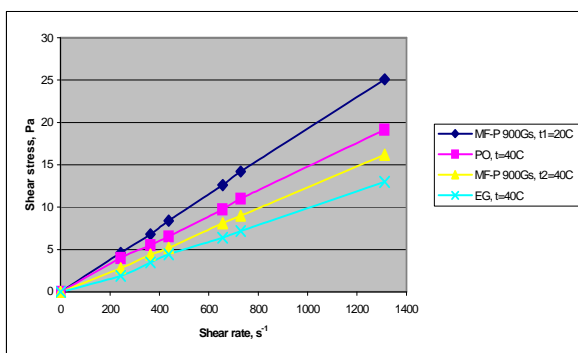
$$\eta = \eta_0 + \tau_0 / \dot{\gamma} \quad (4a)$$

$$\tau = \tau_0 + \eta_0 \cdot \dot{\gamma} \quad (4b)$$

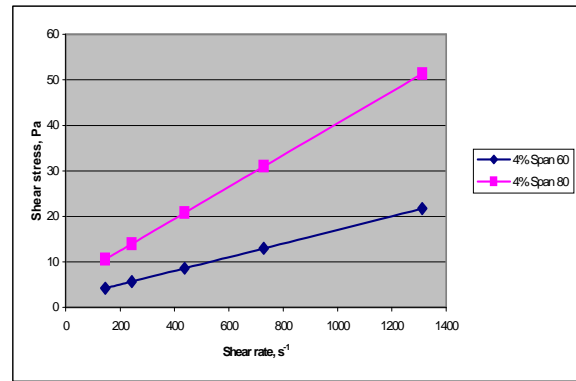
$\tau_0$  and  $\eta_0$  depends on the thermodynamic state. For  $\tau < \tau_0$ , the fluid presents a very rigid molecular structure and behaves as a solid body. If  $\tau > \tau_0$  the molecular structure is destroying and behaves as a liquid. Characteristic types of viscoplastic fluids are: drilling mud, fresh cement, dyes. In our experiments, W/O/W multiple emulsions based on water and paraffin oil (20% paraffin oil, 1% hydrophilic emulsifier Brij 35, 4% lipophilic emulsifier Span 60) present this type of behaviour, figure 2b[3].

### c. Pseudoplastic fluid ( $\tau_0 \neq 0$ ; $m < 1$ )

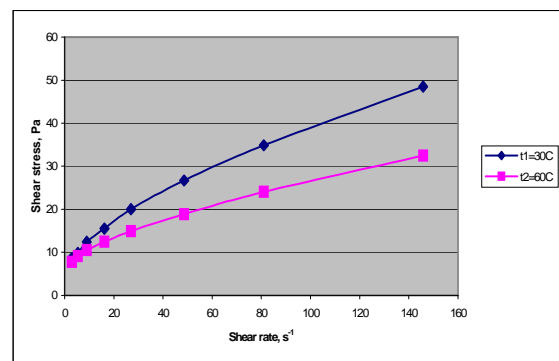
Dynamic viscosity of this fluids type decreases through the shear rate increasing. The phenomenon is specific for different solutions of organic materials. The explanation of viscosity decreasing consists in the orientation of asymmetric molecules for the substance in solution, on the flow direction (position with minimum friction). As examples can be mentioned: fats, solutions of cellulose derivatives, inks, oil products, blood plasma, latex rubber, polymeric solutions. In our experimental studies we met this type of rheological behaviour to multiple emulsions with magnetic fluid content (25% oil based magnetic fluid, 4% lipophilic emulsifier Span 85, 1% hydrophilic emulsifier Tween 65)[4] and to pastes used to cotton textures covering (47.7% water, 50% covering material, 1.5% agglutinant, 0.8% emulsifier and antifoam), figure 2c [5,6].



2a



2b



2c

Figures 2a,b,c. The shear stress  $\tau$  vs the shear rate  $\dot{\gamma}$

**d. Dilatant fluid** ( $\tau_0 = 0$ ;  $m < 1$ ). This behaviour is characteristic to high concentrated suspensions where the liquid phase is placed only between solid particles. Also, when the shear rate increases, the solid particles tend to brake the layers relative flow.

**e. Thixotropic fluids** have a resistance to deformation that depends upon deformation rate and time.

The previous classification is schematic. There are complex fluids with simultaneous pseudoplastic, viscoplastic and thixotropic behaviour.

## 3. Results and discussion

**The temperature influence.** Temperature increasing leads to an accentuated viscosity decreasing; this phenomenon is described by an exponential equation (Arrhenius type), whose the main characteristic is the activation energy of viscous flow  $E_a$ :

$$E_a = A \cdot e^{E_a/RT} \quad (5)$$

Making measurements at different temperatures and using the graphical representation  $\ln \tau = f(1/T)$  was possible to calculate the activation energy of viscous flow  $E_a$  and the pre-exponential factor  $A$ , Table 2.

For Non-newtonian fluids is more accurate to present, as Arrhenius type equation, the shear stress dependence as a function of temperature at certain shear rate value. For Newtonian fluids, through the shear rate increasing, the stationary state is reached almost momentary and the friction energy taken over the rotative cylinder is integrally transformed into heat. The stationary state of viscoplastic fluids is reached after a transition time when a part of the

external energy is accumulated as elastic deformation energy; the behaviour of these fluids at high shear rate values is similar to elastic fluids, figure 3.

Elastic components from viscoelastic fluids can not be eliminated. From this reason it is necessary a preliminary measurement to determine the shear rate and time influence about the sample viscosity and elasticity before to establish the rheometer type used for rheological research of an unknown substance.

The rheological categories present different manifestation when are subjected to rotational motion due to the centrifugal, gravitational and viscous forces.

TABLE 1. Rheological equations

Position	Rheological equation $\tau = \tau_0 + K \cdot \dot{\gamma}^m$	The fluid nature and the main characteristics	The fluid rheological type
A1	$\tau = 0.017 \cdot \dot{\gamma}$	Ethylene glycol, t=25°C	Newtonian
A2	$\tau = 0.028 \cdot \dot{\gamma}$	Paraffin oil, t=25°C	Newtonian
A3a	$\tau = 0.0192 \cdot \dot{\gamma}$	Oil based magnetic fluid (magnetization 900 Gs), t=20°C	Newtonian
A3b	$\tau = 0.0124 \cdot \dot{\gamma}$	Oil based magnetic fluid (magnetization 900 Gs), t=40°C	Newtonian
B1a	$\tau = 2.04 + 0.015 \cdot \dot{\gamma}$	Multiple emulsion based on water and paraffin oil (4% Span 60)	Viscoplastic
B1b	$\tau = 5.46 + 0.035 \cdot \dot{\gamma}$	Multiple emulsion based on water and paraffin oil (4% Span 80)	Viscoplastic
C1	$\tau = 46.8 + 16.9 \cdot \dot{\gamma}^{0.48}$	Pastes for cotton textures covering	Pseudoplastic
C2	$\tau = 4.58 + 2.14 \cdot \dot{\gamma}^{0.62}$	Multiple emulsion based on magnetic fluid	Pseudoplastic

TABLE 2. Values of activation energy and pre-exponential factor [1,2,4]

Liquid	$\eta = A \cdot e^{E_a / R \cdot T}$	$E_a$ , [kJ.mol <sup>-1</sup> ]
Ethylene glycol	$\eta = 5.6 \cdot 10^{-6} \cdot e^{3080 / T}$	25.6
Paraffin oil	$\eta = 5.2 \cdot 10^{-7} \cdot e^{3240 / T}$	26.9
MF-P-900	$\eta = 5.6 \cdot 10^{-6} \cdot e^{2110 / T}$	17.5
MF-PO-400	$\eta = 2.3 \cdot 10^{-7} \cdot e^{4020 / T}$	33.4

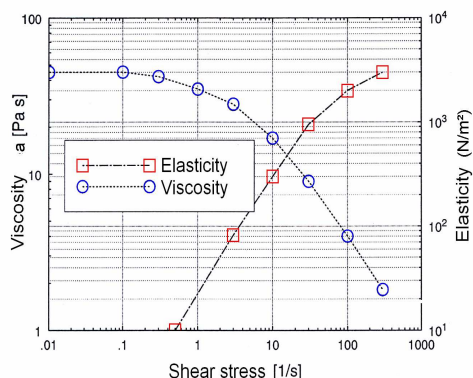


Figure 3. Viscosity and elasticity dependence as a function of shear rate

Thus, the viscous liquids with a behaviour close to Newtonian fluids present in rotation a parabolic surface and are raised on the vessel walls. The liquids with elastic behaviour adhere and raise on the mixer rod, figure 4.

The systems of viscosity measurement with coaxial cylinders come from the Newtonian model with plane parallel surfaces where the two plates were assimilated to lateral surfaces of the two cylinders. Into the ring-shaped space is introduced the fluid which can be submitted to a shearing process, identical with the fluid placed between the plane plates. For an exactly mathematical interpretation some conditions needs to be carried out: laminar flow, stationary state, lower walls adherence, sample's homogeneity, the absence of chemical and physical transformations during the measurement, the absence of sample's elasticity.

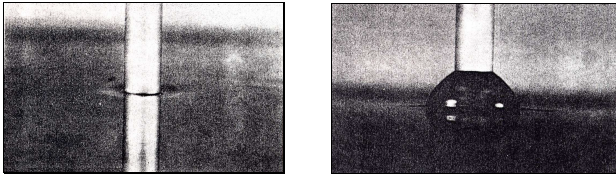


Figure 4. The liquid surface form to a rod rotation ( $d = 9.5\text{ mm}, n = 10\text{ s}^{-1}$ ): oil (Newtonian fluid) and polyisobutene (elastic fluid) [7]

The first rotational rheometer was conceived and built by Maurice Couette in 1890 [8] and contained an external rotative cylinder  $V$  and an inner one  $s$  suspended by a torsion wire  $C'$ . Into the ring-shaped space between cylinders there is the liquid sample. By rotation of the outer cylinder, the liquid placed in the ring-shaped space is set in turbionar motion which act about the inner cylinder and produced the partial rotation and the wire torsion. The unghiular deflection is measured using the mirror  $v'$  and allows the torsion moment estimation for the inner cylinder.

**Taylor-Couette instability.** Hydrodynamic regime Reynolds particularized for the flow in ring-shaped spaces under the rotational motion effect is known as Taylor-Reynolds criteria  $Ta_{Re}$  and depends on the angular velocity, cylinders radii and kinematic viscosity [9]. The transition domain between laminar and turbulent motion is considered  $60 \leq Ta_{Re} \leq 1712$ .

$$Ta_{Re} = \omega \cdot r_i \cdot (r_o - r_i) / \nu \quad (6)$$

Taylor hydrodynamic criteria defined as the ratio between the centrifugal force and the viscous friction one depends on the geometry of the ring-shaped space (radii of the two cylinders), revolution, and liquid properties:

$$Ta = F_{centrif} / F_{viscous} = \omega^2 \cdot r_i \cdot (r_e - r_i)^3 / \nu^2 \quad (7)$$

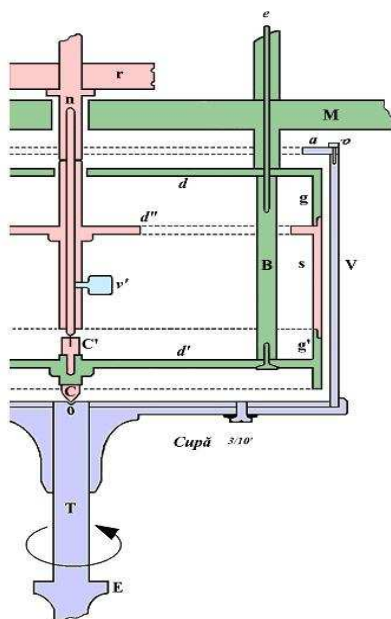


Figure 5. The original Couette rheometer

These criteria allow quantitative estimation of certain modifications which appear in liquids subject to rotational motion in ring-shaped spaces due to layers deformation through gradually revolution increasing. Thus, is possible to identify the transition or critical regime specific to different rheological types. Through the limit exceeding of laminar flow regime the circular current lines are deformed and become corrugated (Taylor-Couette instability).

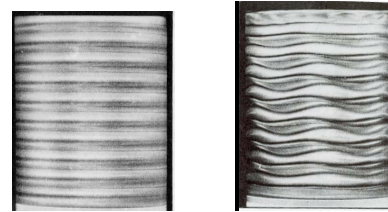


Figure 6. Taylor-Couette instability (to the exceeding of laminar regime)

**The end effect.** To measurement results evaluation, the rotation moment is considered proportionally to viscosity and is calculated as an effect of the friction force from the ring-shaped space. Both rotor end zones induce an additional effect but, through the selection of a suitable geometry for the device with coaxial cylinders, the errors can be minimized [10]. In figure 7 are presented different constructive types of rotative cylinders (sensors) for end effect decreasing: (a) bell-shaped hereupon both lateral faces are active; (b) with engrossed cylinder extremities – the inferior concavity remains filled with air and the friction is negligible due to very low viscosity; (c) with concave ending for the outer cylinder and conical for the rotor; (d) with standardization and correlation of dimensions ratios.

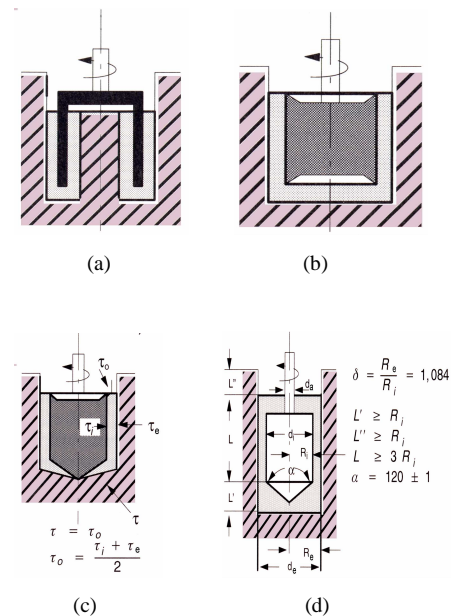


Figure 7. Constructive types of rotative cylinders for the end effect decreasing

**Modified Couette rheometer.** For the study of certain effects which appear to liquids rotational motion in ring-shaped spaces in transition regime, was conceived and achieved a modified Couette rheometer, figure 8.

A, B - coaxial glass cylinders; C- elastic coupling; D- the adjustment of elastic tube high; E- attachment ring; F- coupling bars; G- disk for the torsion measurement; H- stretching thread with regulating loop; 1a,1b- the revolution inductive detector; 2a, 2b- magnetic system for the torsion measurement; 3- force detector; 4- raising system actuated by a step by step engine;

- Slide sealing with circular plane surfaces;
- Revolution adjustment through frequency modulation;
- The cylinder torsion angle is noted and changed in unified electric signal which can be amplified and modulated (analyzed by an oscilloscope or graphic recorded);
- For significant sizes there are interfaces for data acquisition;
- The entire cylinders ensemble is under thermostatic control.

The cylinders were glass made; the inner is subject to a controlled and adjustable rotational motion and the outer is setting into an elastic joint. Its oscillations (the torsion angle) are correlated to the resisting moment which appears due to the friction transmitted through the liquid placed between the two cylinders.

Based on these calculations it were considered as optimal the next values: inner radius 40mm, the ring-shaped space thickness 2mm, height 290mm; revolution domain for water  $0.02 \div 6s^{-1}$ .

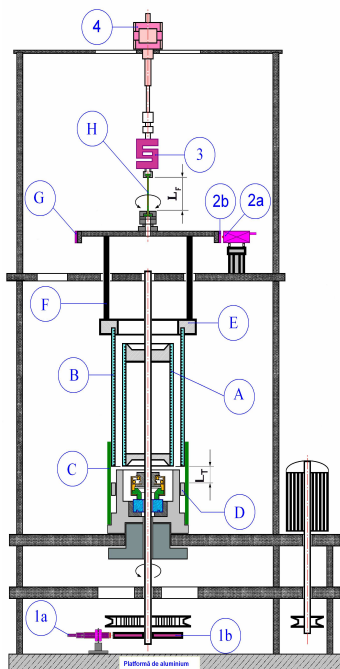


Figure 8. Modified Couette rheometer (automating variant)

The measurement of the outer cylinder torsion is realized using a magnetic measure system without contact. It consists of a magnetic belt fixed on a disk surface solidary mounted with cylinder and a magnetic sensor

placed on the rheometer body (2a,b) thus to appear an  $0.1 \div 2mm$  interstice. Through the magnetic belt removal, impulses are registered by the sensor and is possible to measure the circular curve which the disk is rotate. Standardization indicated that to one rotation are recorded 224.4 impulses, which corresponds to an  $1.6$  degree/impulse angle ( $28 \times 10^{-3}$  rad/impulse).

The outer cylinder suspended on its top using a thin, resistant and non-extensible thread, lightly torsionable (H) is stretched by a stepper motor. Thus, it is produced a determined straining of the fastening elastic system (C). As a function of the certain thread strainings, through standardization using a torsion balance, the dependence between the rotation angle and the torsion moment was established, figure 9.

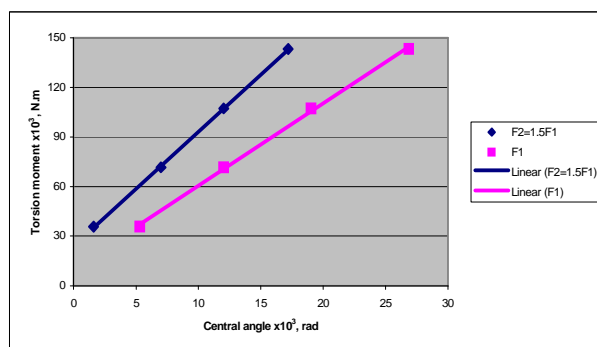


Figure 9. The torsion moment vs. central angle

The dependence between the torsion moment  $M_t$  and the central angle  $\Delta\theta$  is represented through the followed equations (8a for F1 and 8b for F2=1.5F1):

$$M_t = 5 \cdot \Delta\theta + 10.6 \cdot 10^{-3} \quad (8a)$$

$$M_t = 7 \cdot \Delta\theta + 24.2 \cdot 10^{-3} \quad (8b)$$

#### 4. Conclusions

- The rotational motion of liquids in ring-shaped spaces presents characteristics determined by the shear rate of parallel layers and the shear stress is influenced by the liquid nature and the deformation strength;
- The effects which appear can be characterized using specific rheological equations; the geometry of ring-shaped spaces and the liquid properties influence the flow hydrodynamic regime and the surface form;
- The achievement and standardization of a rotative rheometer allow a complex study of the liquids rheological behaviour, into a large flow domain.

#### REFERENCES

1. Tămaș, A., Borș, N., Minea R., *Bul.Univ.Petrol-Gaze din Ploiești, Seria Tehnică*, **2008**, in press.
2. Minea, R., *Teză de doctorat*, Univ. Politehnica din Timișoara, **1999**.
3. Tămaș, A., Urșica, L., Minea, R., *Ovidius University Annals of Chemistry*, **2002**, 13(1), pp.72-74.

4. Tămaș, A., *Teză de doctorat*, Univ. Politehnică din Timișoara, **2004**
5. Minea, R., Mihuța, S., Tămaș, A., *Analele Univ. "A.Vlaicu" din Arad, Seria Textile*, **2002**, pp.101-104.
6. Tămaș, A., Minea, R., Mihuța, S., 4<sup>th</sup> International Conference of PhD Students, Miskolc, **2003**, vol. Eng. Sciences II, pp. 405-410.
7. Beavers, G.S., Joseph, D.D., *J.Fluid Mech.*, 1975, 69, pp. 475.
8. Couette, M.A., *Annales de Chimie et de Physique*, **1890**, 21, pp. 433-510
9. Lewis, G.S., Swinney, H.L., *Physical Review E*, **1999**, 59(5), pp. 5457-5467
10. Kobayashi, H., Nashima, T., Okamoto, Y., Kaminaga, F., *Rev. Sci. Instrum.*, **1991**, 62(11), pp. 2748-2750.